



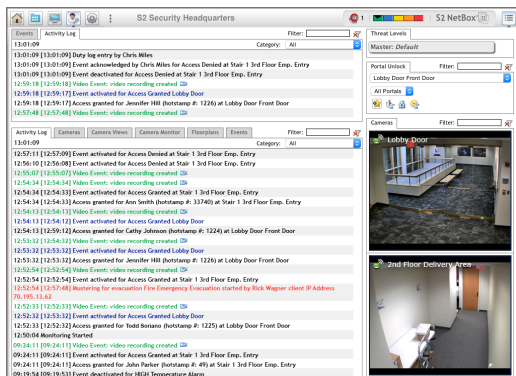
S2 NetBox® Enterprise

Overview

S2 NetBox Enterprise is a powerful, web-based access control and event monitoring system designed for deployments with demanding security requirements. The system can support over 7,000 portals and over 500 S2 Nodes. Optional high availability offers automatic system failover between a redundant pair of servers. Optional system partitioning allows the entire database to be separated into multiple smaller systems for entities such as field offices or tenants.

Features such as person record and cardholder management, event and alarm monitoring, threat level escalation and reporting are accessible from any web browser. There is no software to install. S2 NetBox Enterprise works with existing infrastructure and peripheral devices, making it easy to deploy. In addition, S2 NetBox Enterprise tightly integrates with S2 NetVR® series video management systems, providing unified system management and administration. Integration with third party video management systems is also supported.

S2 NetBox Enterprise is ideal for large, complex security deployments. For organizations that have outgrown their S2 NetBox system, the upgrade to S2 NetBox Enterprise is seamless. Distributed enterprises can manage multiple S2 NetBox Enterprise servers with S2 Global®, allowing for virtually unlimited scalability.



S2 NetBox Enterprise is web-based, with one-click access to major system functionality.

Key Features

Access Control

- **Portals:** Supports up to 7,168 doors or other access points
- **Event and Alarm Monitoring:** Includes comprehensive event logging, notification and escalation
- **Threat Level Management:** Provides configurable system status and response actions such as system lock downs
- **Person Record Management:** Maintains detailed, credential-driven user records and access history
- **Reporting:** Offers pre-defined and custom reports

System

- **Web Interface:** Delivers browser-based, unified system management and administration
- **Solid-State Design:** Extends product lifecycle, lowering total cost of ownership
- **Video Integration:** Works with S2 NetVR series video management systems and other third party video systems
- **API Support:** Integrates with third party products such as human resource databases via an open source API
- **Automated System Management:** Automatically discovers S2 Nodes and handles system backups
- **Mobile App:** Allows for mobile security management using S2 Mobile Security Officer®
- **System Partitioning Option:** Allows the entire database to be separated into multiple smaller systems
- **High Availability Option:** Offers automatic system failover between a redundant pair of servers

Specifications

S2 NetBox Enterprise 50

Access Control	
Cardholders	150,000
Access Levels	Unlimited
Unique User Roles	16
Simultaneous Users	25
Time Specifications	512
Portal Capacity	1,792
S2 Node Capacity ¹	128
Maximum Inputs / Outputs	2,000 / 2,000
Online Transactions	Up to 160 million records

Client Requirements	
Operating System	Any; for badging use Windows 7
Browser ²	Chrome, Internet Explorer, Firefox and Safari
Processor	Intel Core i3 or higher
Memory (RAM)	8GB minimum
Hard Drive	100GB minimum

Appliance	
Storage Capacity	128GB
Storage Configuration	N/A
Processor	Intel Pentium
Memory (RAM)	4GB
Operating System	Ubuntu Linux
Ethernet Ports	1
MTBF	172,199
Chassis	Standard 1U rack mount, rail kit included
Dimensions (H, W, D)	1.67in x 17.25in x 21.8in (4.24cm x 43.82cm x 55.37cm)
Weight	18 lbs (8.17 kg)
Operating Temperature	50° – 95°F (10° – 35°C)
Storage Temperature	-40° – 158°F (-40° – 70°C)
Operating Environment	Humidity 85%, non-condensing 35°C
AC Input	100 – 240 VAC, 50/60 Hz, 6/3A
BTU Maximum	948 per hour
Regulatory Approvals	UL, CE, FCC, RoHS
Warranty	2 years, hardware; 1 year, software

Integrations ³	
Video Management	S2 NetVR series VMS and other major VMS manufacturers
S2 NetVR Capacity	64
S2 NetVR Camera Capacity	4,096
Concurrent S2 Client Connections (S2 NetBox, S2 Magic Monitor®, S2 Mobile Security Officer)	25
Third Party VMS Camera Capacity	1,024
Access Control	Allegion, ASSA ABLOY, DMP and Mercury

S2 NetBox Enterprise 100

Access Control	
Cardholders	150,000
Access Levels	Unlimited
Unique User Roles	16
Simultaneous Users	35
Time Specifications	512
Portal Capacity	7,168
S2 Node Capacity ¹	512
Maximum Inputs / Outputs	2,000 / 2,000
Online Transactions	Up to 400 million records

Client Requirements	
Operating System	Any; for badging use Windows 7
Browser ²	Chrome, Internet Explorer, Firefox and Safari
Processor	Intel Core i3 or higher
Memory (RAM)	8GB minimum
Hard Drive	100GB minimum

Appliance	
Storage Capacity	128GB
Storage Configuration	RAID 1
Processor	Intel Xeon quad core
Memory (RAM)	8GB
Operating System	Ubuntu Linux
Ethernet Ports	1
MTBF	172,199
Chassis	Standard 1U rack mount, rail kit included
Dimensions (H, W, D)	1.67in x 17.25in x 21.8in (4.24cm x 43.82cm x 55.37cm)
Weight	18 lbs (8.17 kg)
Operating Temperature	50° – 95°F (10° – 35°C)
Storage Temperature	-40° – 158°F (-40° – 70°C)
Operating Environment	Humidity 85%, non-condensing 35° C
AC Input	100 – 240 VAC, 50/60 Hz, 6/3A
BTU Maximum	1,327 per hour
Regulatory Approvals	UL, CE, FCC, RoHS
Warranty	2 years, hardware; 1 year, software

Integrations ³	
Video Management	S2 NetVR series VMS and other major VMS manufacturers
S2 NetVR Capacity	128
S2 NetVR Camera Capacity	4,096
Concurrent S2 Client Connections (S2 NetBox, S2 Magic Monitor®, S2 Mobile Security Officer)	35
Third Party VMS Camera Capacity	1,024
Access Control	Allegion, ASSA ABLOY, DMP and Mercury

Specifications (continued)

S2 NetBox Enterprise 50

S2 NetBox Enterprise 100

Part Numbers

S2-EX50-128 Includes 128 portal license

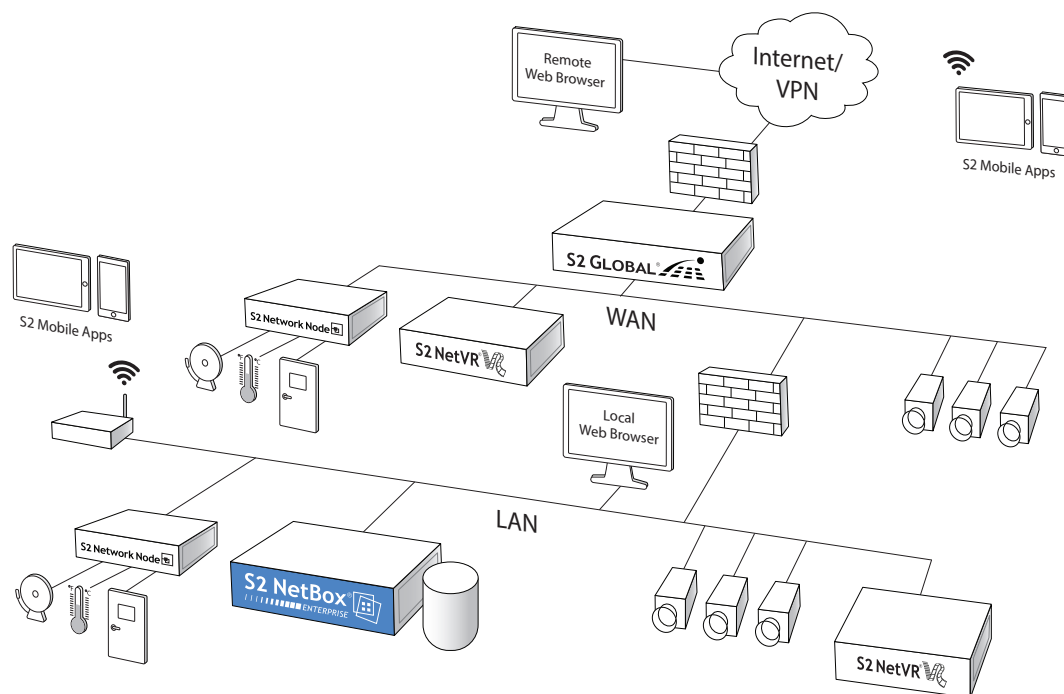
Portal licenses expandable in 64 portal increments to 1,792 portals.
Refer to price book for additional part numbers.

Part Numbers

S2-EX100-128 Includes 128 portal license

Portal licenses expandable in 64 portal increments to 7,168 portals.
High availability option offered. Refer to price book for additional part numbers.

Schematic Diagram - S2 Security System



Schematic only. Not a network diagram.

¹ S2 Network Node capacity may vary depending on system design.

² Refer to the latest Release Notes for browser version compatibility.

³ For additional integration information, contact sales@s2sys.com.

For more information, please visit www.s2sys.com.