

S2 Relayed Output Application Blade

Overview

S2 Relayed Output Application Blade is an interface board with eight Form C relay output points to support a wide range of devices. The eight programmable output relays can be configured for fail-safe or fail-secure operation. Relay status is activated by card reader operation, event triggers and manual activation. Compatible devices include alarm annunciation devices, indicator lights, elevator control circuits, alarm panels and more.

Up to seven S2 Application Blades in any combination can be supported by an S2 Network Node. S2 Application Blades are easy to install – S2 Nodes automatically recognize and address them without jumpers or switches. Power and communications are delivered to every S2 Application Blade via a ribbon cable bus.

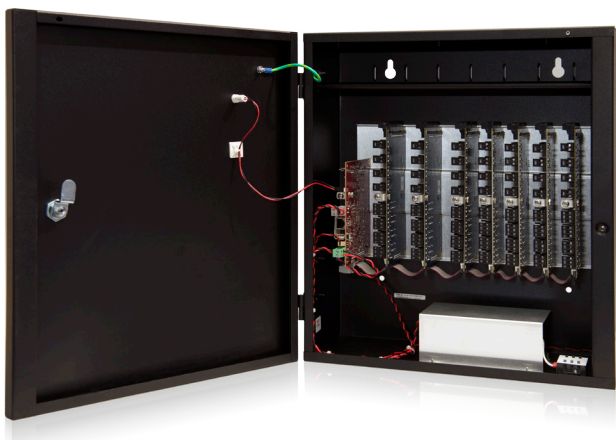
Key Features

Inputs

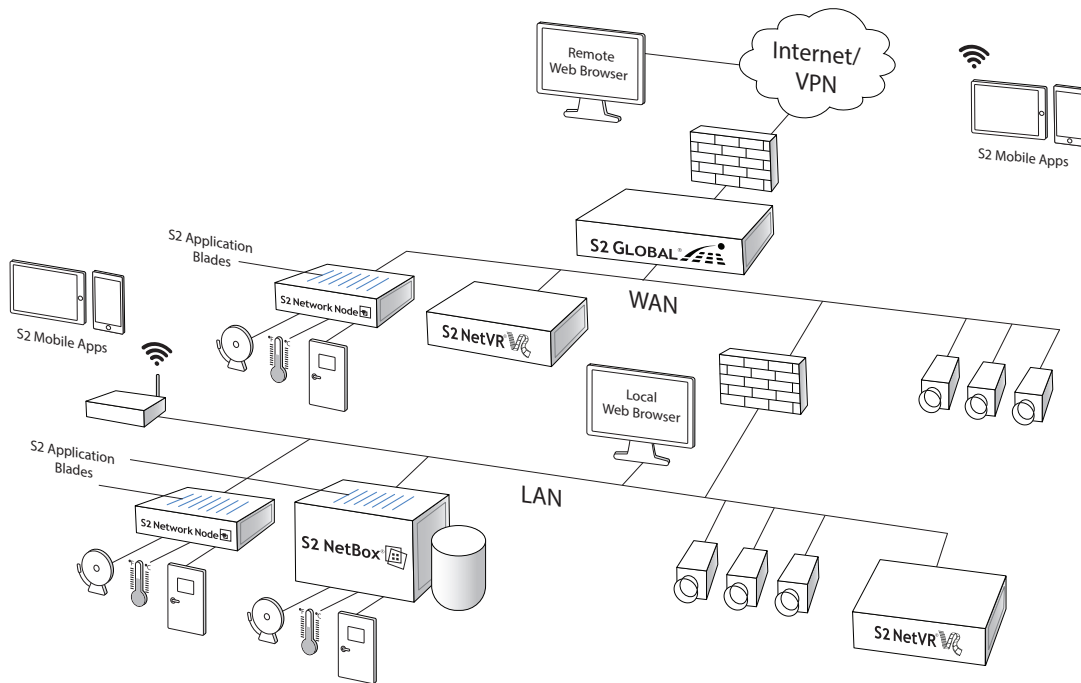
- **Device Support:** Supports alarm annunciation devices, indicator lights, elevator control circuits, alarm panels and and more
- **Output Configuration:** Includes eight outputs configurable to fail-safe or fail-secure operation

System

- **Automatic Discovery:** Automatically connects to an S2 Node without jumpers or switches
- **Hardware Compatibility:** Fits available blade slots in S2 NetBox®, S2 NetBox VR Quatro, S2 Network Node and S2 Network Node VR hardware



Up to seven S2 Application Blades in any combination can be supported by an S2 Network Node.



Schematic only. Not a network diagram.

Specifications – S2 Relayed Output Application Blade

Access Control

Relay Outputs	8, Form C
Output Description	Dry, Form C, single-pole double-throw (C / NO / NC) contacts for load switching

General

Relay Contact Rating	30VDC/AC, 2.5A inductive or 5.0A non-inductive
Dimensions (H, W, D)	7.5 in x 4.0 in x 0.83 in (191 mm x 102 mm x 21.1 mm)
Weight	7.0 oz (198 g)
Operating Temperature	32°F – 95°F (0°C – 35°C)
Storage Temperature	-4° – 158°F (-20° – 70°C)
Operating Environment	Humidity 85%, non-condensing 35° C
BTU Maximum	20 per hour
Regulatory Approvals	UL, CE, RoHS
Warranty	2 years, hardware

Cabling Requirements

Relayed Output Cable	Twisted, shielded 22 AWG Belden #9462 or equivalent
Max Relayed Output Cable Distance	Determined by the peripheral device

Part Numbers

S2-OUTP	Relay controlled output application extension blade with 8 outputs
----------------	--

For more information, please visit www.s2sys.com.