

S2 Temperature Input Application Blade

Overview

S2 Temperature Input Application Blade is an interface board for monitoring analog ambient temperature. Each of the eight inputs supports an S2 Temperature Sensor Probe. Input points can be individually configured to display the current temperature on system floor plans, as well as trigger events based on a high or low temperature reading from a single probe.

Up to seven S2 Application Blades in any combination can be supported by an S2 Network Node. S2 Application Blades are easy to install – S2 Nodes automatically recognize and address them without jumpers or switches. Power and communications are delivered to every S2 Application Blade via a ribbon cable bus.

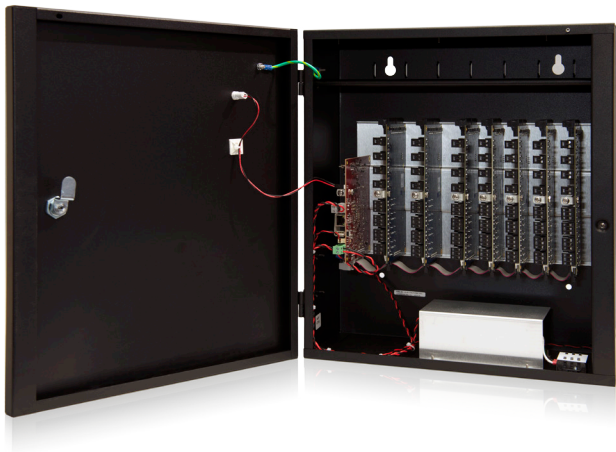
Key Features

Inputs

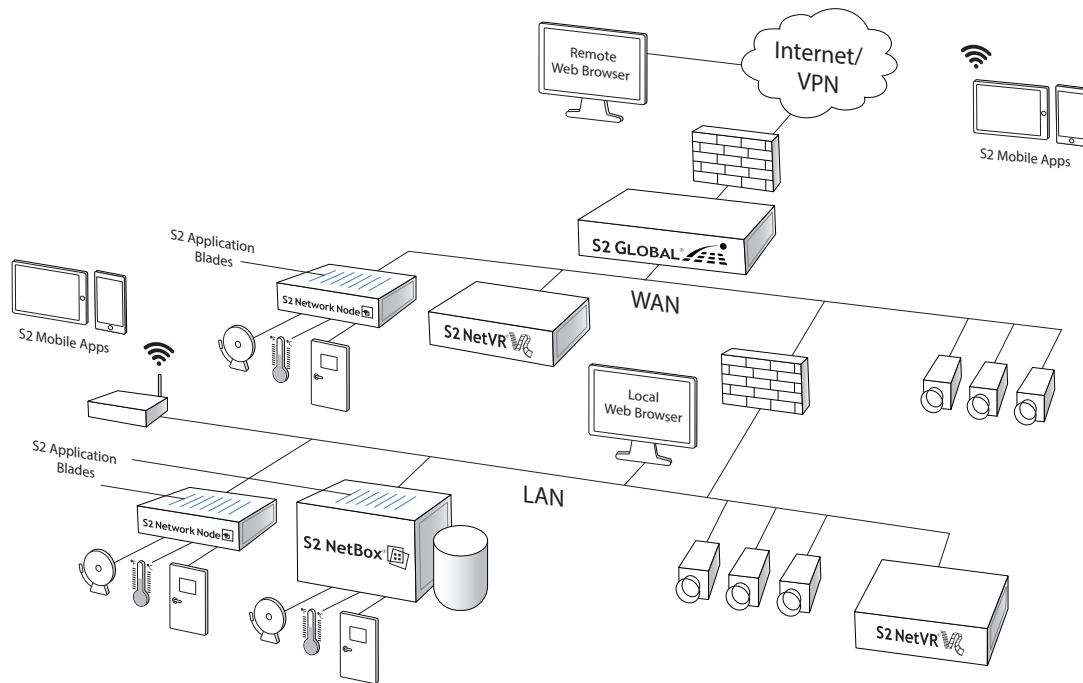
- **Device Support:** Supports S2 Temperature Probe

System

- **Automatic Discovery:** Automatically connects to an S2 Node without jumpers or switches
- **Hardware Compatibility:** Fits available blade slots in S2 NetBox®, S2 NetBox VR Quatro, S2 Network Node and S2 Network Node VR hardware



Up to seven S2 Application Blades in any combination can be supported by an S2 Network Node.



Schematic only. Not a network diagram.

Specifications – S2 Temperature Input Application Blade

Access Control

Temperature Inputs 8

General

DC Input 12VDC, supplied via ribbon cable connection from S2 hardware

Dimensions (H, W, D) 7.5 in x 4.0 in x 0.83 in
(191 mm x 102 mm x 21.1 mm)

Weight 4.5 oz (127 g)

Operating Temperature 32°F – 95°F (0°C – 35°C)

Storage Temperature -4° – 158°F (-20° – 70°C)

Operating Environment Humidity 85%,
non-condensing 35° C

Regulatory Approvals UL, CE, RoHS

Warranty 2 years, hardware

Cabling Requirements

Temperature Input Cable Cat3 / Cat5

Max Supervised Input Cable Distance 500ft / 1000ft (152.4m / 304.8m)

Part Numbers

S2-TEMP Temperature input application extension blade with 8 temperature inputs

S2-TEMP-PR Temperature sensor probe for use with S2-TEMP

For more information, please visit s2sys.com.

© 2017 S2 Security Corporation. All rights reserved. S2 Security and S2 NetBox are registered trademarks of S2 Security Corporation. Third-party trademarks are the property of their respective owners. Data subject to change without notice.

S2103017

